

## User Manual

Fortempbase®-Dv3 -Data Management Software

tempbase®-Dv3  
Data Management Software



### Summary

Theme	Page
01. Product Overview	2
02. Installation Environment	2
02.1 System Requirements	2
02.1 Operation System	2
03. Main Function	2
03.1 Main Interface	2
03.2 Data Query	7
03.3 Data Management	8
04. Parameter Settings	9
04.1 Parameter Settings TEMP002	9
04.2 Parameter Settings TEMP002 v2	11
05. Sensor Adjustment	13
06. Export Data	14

# User Manual

## tempbase.®-Dv3 Software

### 01. Product Overview

tempbase®-D data management software for TEMP002 can program the logger, upload every recorded data to computer, systematically analyze or collect and manage the data.

### 02. Installation Environment

#### 02.1 System Requirements

CPU: min. PII 600 Mhz  
Hard disk: min. 100 Mb  
Memory: min. 512 Mb

#### 02.2 Operation System

Windows XP (32bit, 64bit), Windows Vista (32bit, 64bit), Win7 (32bit, 64bit), Windows8(x86/x64), Windows10

### 03. Main Functions

#### 03.1 Main Interface

#### Summary

Device Information		Device State	Stop	Probe Mode	Internal
Serial Number	TMM150500218	Log Interval	00H 00M 10S	Multiple Start/Stop	Enable
Temperature Type	°C	Start Delay	00D 00H 00M 00S	Pause Enable/Disable	Disable
Start Mode	Start by Button	Time Zone	UTC +02:00		
Internal ID	0000001				
Description	Temperature recording.				

Logging Summary		Record Mode	Stop when full	Start Time	04-May-16 07:40:20
Highest Temperature	26.5 °C	Stop Mode	Stop by Button	Stop Time	04-May-16 09:22:10
Lowest Temperature	7.1 °C	Data Points	612	Elapsed Time	00D 01H 41M 00S
Average Temperature	20.0 °C	Temporary Report	Enable	Alarm At	04-May-16 07:46:50
MKT	21.9 °C				

Alarm Zone	Alarm Delay	Total Time	No. of Violations	Alarm At	Status
Ht:Over 25.0 °C	00D 00H 00M 00S(Cum)	00D 00H 23M 00S	1	04-May-16 07:46:50	Alarm
Lt:Below 15.0 °C	00D 00H 00M 00S(Cum)	00D 00H 25M 50S	1	N/A	Alarm

### Tool Buttons



Stop by software: Stopping of the logging operation is prevented and the logger can only be stopped by tempbase.®-D software.

\*only for S1v2 or M1v1.3



Even if the tempmate is stopped, the logger is still recording until the memory is full, or battery is low. The Backup-Log can be generated by tempbase.®-D software and is not visible on the logger itself.

\*only for S1v2



Download recorded data from tempmate.® logger.



Manual save data: If current data is not saved into tempbase.®-D, press this button to save it. During the first data record, the system will automatically save. If new data are recorded, and the user inserts the logger to the computer once more, the user needs to save the data manually by clicking this button. It will display a dialog box to save the data.



Data base query interface, displays all saved data information.



Export data in the format of PDF, EXCEL or ELT.



tempmate.® datalogger parameter settings.



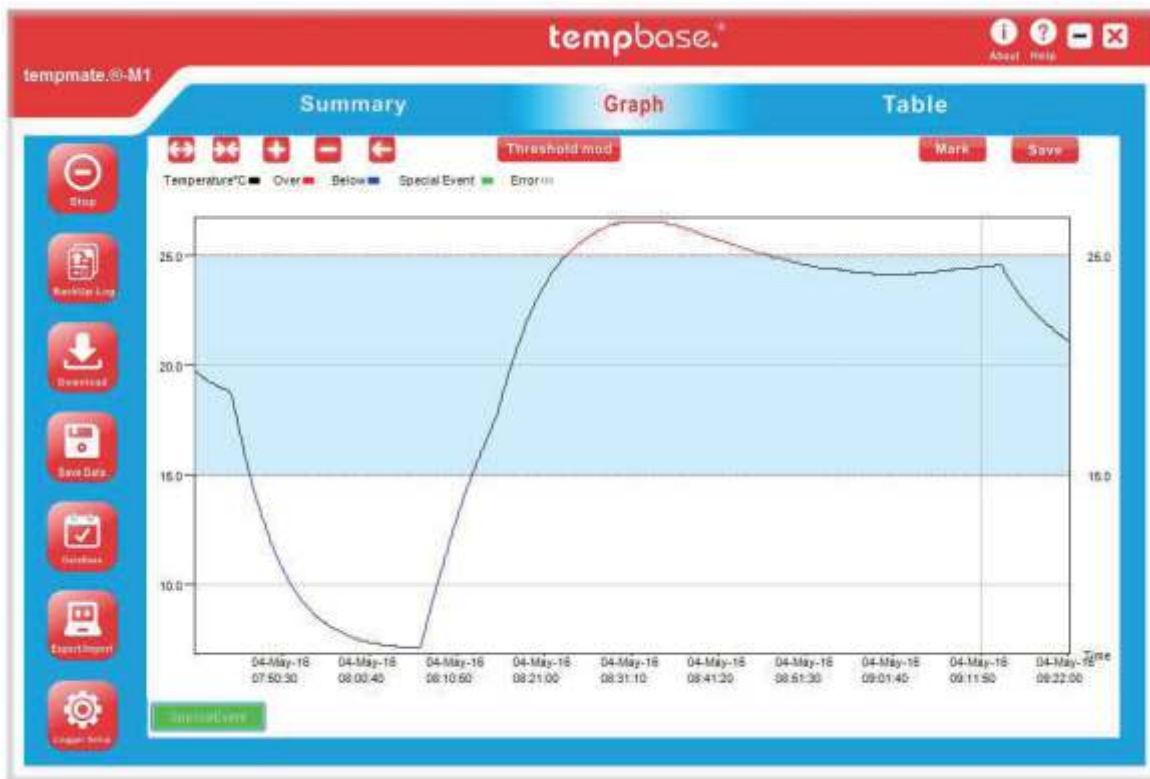
About tempbase®



Help

Parameter Information	
Device ID	tempmate.® Data logger ID
Log Interval	Record interval
Time Zone	Time Zone
Probe Mode	Temperature sensor type (internal or external)
Start Mode	Logger start mode (manual or timed)
Temperature Type	Temperature type (Celsius or Fahrenheit)
Multiple Start/Stop	Permit logger to be started or stopped for several times
Start Delay	Logger start delay time
Pause Enable/Disable	Permit/prohibit pause of logger
Travel ID	Travel ID number
Travel DSC	Travel description
Highest Temperature	Max. temperature
Stop Mode (set)	Stop mode-setting value
Lowest Temperature	Min. temperature
Stop Mode (actual)	Actual stop mode
Stop Time	Stop time
Average Temperature	Average temperature
Data Points	The total recorded pieces
Elapsed Time	The total recording time
MKT	Mean kinetic temperature
Temporary PDF	Permit to temporarily generate a PDF file after inserting the logger
Over	Upper alarm limit
Below	Lower alarm limit
Alarm delay	Alarm delay time
Total Time	The accumulated alarm time
Alarm Events	The times alarm occurs
First Triggered	First alarm time
Status	Logger alarm status

### Graph



Stretch curve horizontally



Swage curve horizontally



Curve zoom in



Curve zoom out



Return curve to the original size

Threshold mod

Modify alarm threshold dynamically

Mark

Marking function in the curve

Save

Save the marking in the curve

SpecialEvent

Marking event display function

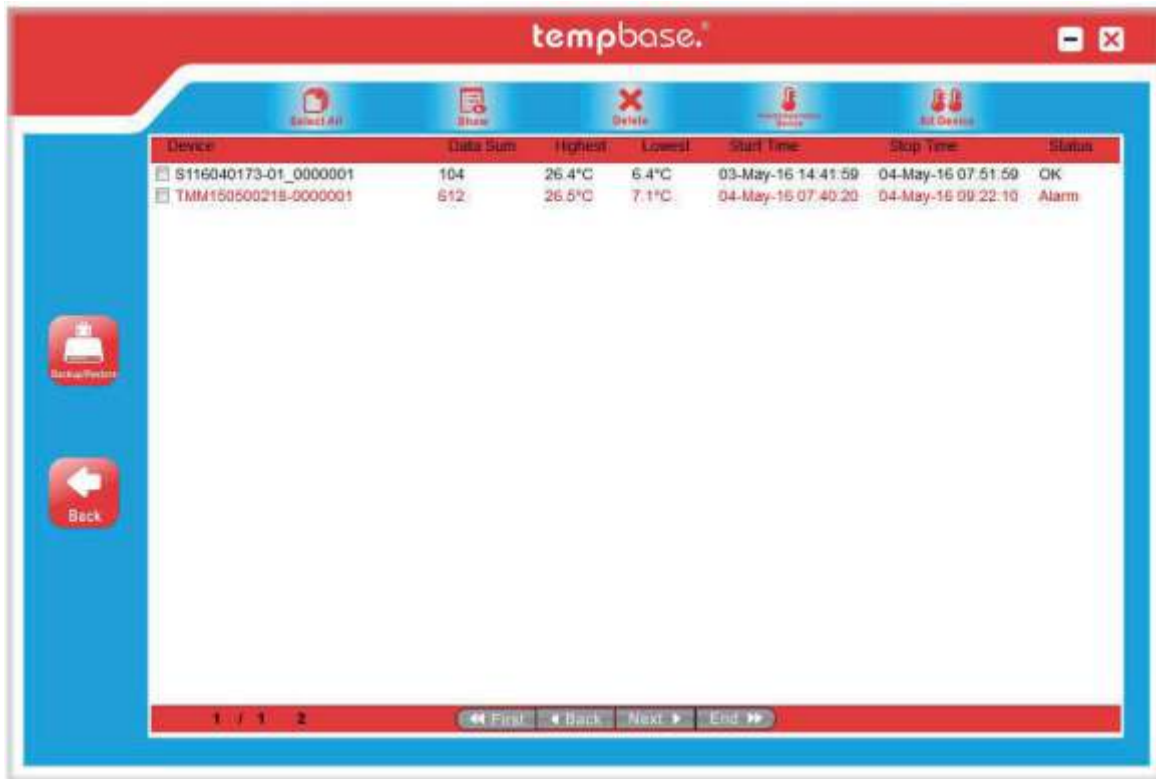
### Table

ID	Time	T°C	ID	Time	T°C	ID	Time	T°C	ID	Time	T°C
1	04-May-16 07:40:20	19.7	26	04-May-16 07:44:30	18.7	51	04-May-16 07:48:40	12.5	76	04-May-16 07:52:50	9.2
2	04-May-16 07:40:30	19.7	27	04-May-16 07:44:40	18.5	52	04-May-16 07:48:50	12.3	77	04-May-16 07:53:00	9.1
3	04-May-16 07:40:40	19.6	28	04-May-16 07:44:50	18.2	53	04-May-16 07:49:00	12.1	78	04-May-16 07:53:10	9.1
4	04-May-16 07:40:50	19.6	29	04-May-16 07:45:00	17.9	54	04-May-16 07:49:10	11.9	79	04-May-16 07:53:20	9
5	04-May-16 07:41:00	19.5	30	04-May-16 07:45:10	17.6	55	04-May-16 07:49:20	11.8	80	04-May-16 07:53:30	8.9
6	04-May-16 07:41:10	19.5	31	04-May-16 07:45:20	17.3	56	04-May-16 07:49:30	11.6	81	04-May-16 07:53:40	8.9
7	04-May-16 07:41:20	19.4	32	04-May-16 07:45:30	17	57	04-May-16 07:49:40	11.5	82	04-May-16 07:53:50	8.8
8	04-May-16 07:41:30	19.4	33	04-May-16 07:45:40	16.7	58	04-May-16 07:49:50	11.3	83	04-May-16 07:54:00	8.7
9	04-May-16 07:41:40	19.3	34	04-May-16 07:45:50	16.5	59	04-May-16 07:50:00	11.2	84	04-May-16 07:54:10	8.6
10	04-May-16 07:41:50	19.3	35	04-May-16 07:46:00	16.2	60	04-May-16 07:50:10	11	85	04-May-16 07:54:20	8.6
11	04-May-16 07:42:00	19.2	36	04-May-16 07:46:10	15.9	61	04-May-16 07:50:20	10.9	86	04-May-16 07:54:30	8.5
12	04-May-16 07:42:10	19.2	37	04-May-16 07:46:20	15.6	62	04-May-16 07:50:30	10.8	87	04-May-16 07:54:40	8.5
13	04-May-16 07:42:20	19.2	38	04-May-16 07:46:30	15.4	63	04-May-16 07:50:40	10.6	88	04-May-16 07:54:50	8.4
14	04-May-16 07:42:30	19.2	39	04-May-16 07:46:40	15.1	64	04-May-16 07:50:50	10.5	89	04-May-16 07:55:00	8.4
15	04-May-16 07:42:40	19.1	40	04-May-16 07:46:50	14.8	65	04-May-16 07:51:00	10.4	90	04-May-16 07:55:10	8.3
16	04-May-16 07:42:50	19.1	41	04-May-16 07:47:00	14.6	66	04-May-16 07:51:10	10.3	91	04-May-16 07:55:20	8.3
17	04-May-16 07:43:00	19	42	04-May-16 07:47:10	14.3	67	04-May-16 07:51:20	10.1	92	04-May-16 07:55:30	8.2
18	04-May-16 07:43:10	19	43	04-May-16 07:47:20	14.1	68	04-May-16 07:51:30	10	93	04-May-16 07:55:40	8.2
19	04-May-16 07:43:20	19	44	04-May-16 07:47:30	13.9	69	04-May-16 07:51:40	9.9	94	04-May-16 07:55:50	8.1
20	04-May-16 07:43:30	18.9	45	04-May-16 07:47:40	13.7	70	04-May-16 07:51:50	9.8	95	04-May-16 07:56:00	8.1
21	04-May-16 07:43:40	18.9	46	04-May-16 07:47:50	13.5	71	04-May-16 07:52:00	9.7	96	04-May-16 07:56:10	8
22	04-May-16 07:43:50	18.9	47	04-May-16 07:48:00	13.2	72	04-May-16 07:52:10	9.6	97	04-May-16 07:56:20	8
23	04-May-16 07:44:00	18.9	48	04-May-16 07:48:10	13	73	04-May-16 07:52:20	9.5	98	04-May-16 07:56:30	8
24	04-May-16 07:44:10	18.8	49	04-May-16 07:48:20	12.9	74	04-May-16 07:52:30	9.4	99	04-May-16 07:56:40	7.9
25	04-May-16 07:44:20	18.8	50	04-May-16 07:48:30	12.7	75	04-May-16 07:52:40	9.3	100	04-May-16 07:56:50	7.9

- ◀ First      Display first page data
- ◀ Back      Display previous page data
- Next ▶      Display next page data
- End ▶▶      Display last page data
- GO      Skip to the specific page

### 03.2 Data Query

#### Data Base



Select all loggers



View the detailed information of the selected logger



Delete the data of selected logger



Display all loggers which have exceeded upper/lower limit



Display all recordings (including the normal temperature data and over temperature data)



Data management function



Back to home page

### 03.3 Data Management

#### Backup or Restore



Data backup (save data in the format of ELT)



Data restore (Restore ELT file and read it by software)



Back to home page




### 04. Parameter Setting

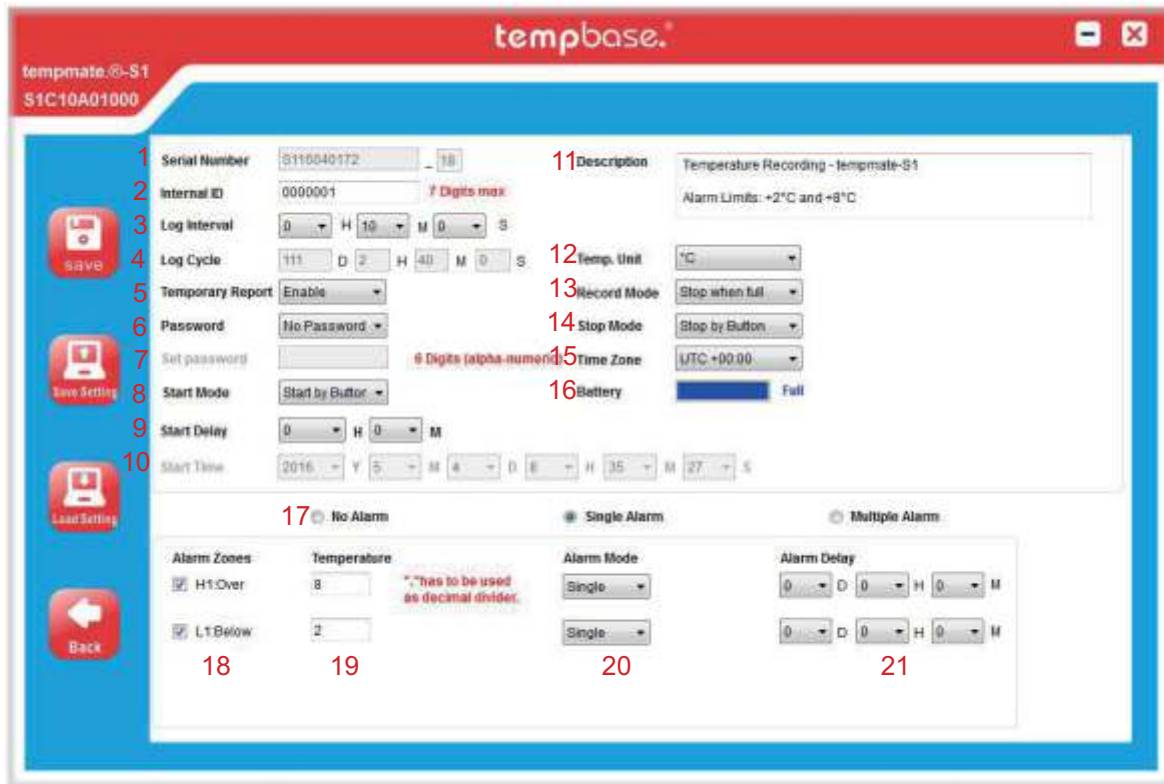
#### 4.1 TEMP002

1. Serial Number	Shows the serial number of the connected device
2. Internal ID	Internal ID can be saved to the TEMP002
3. Log Interval	Adjust the time between the measuring points
4. Log Cycle	Calculates the maximum runtime until the storage is full (battery life excluded!)
5. Probe Mode	Choose whether internal or external sensor should be used
6. Password	Enable or disable password function (PDF can't be read out without password)
7. Set Password	Choose a password with 6 digits or characters
8. Start Mode	Right now • TEMP002 starts working after disconnecting Start by Button • TEMP002 starts after pressing "Start" for 5 seconds Timing • Start date and time has to be set before, then the TEMP002 starts automatically when the start time is reached. It can't be started before!
9. Start Delay	Choose start delay (unlocked in "Start by Button" mode)
10. Start Time	Choose start time (unlocked in "Timing" start mode)
11. Description	Type your own description here
12. Temp. Unit	Switch the temperature unit between "°C" and "°F"



13. Record Mode	Select "Stop when full" or "Ring Buffer"
14. Stop Mode	Select "Stop by Button" or "Stop by Software"
15. Time Zone	Change the time zone (factory setting is UTC +00:00)
16. Battery	Shows the battery status of the current device
17. Display Time	Setup the time the display is active
18. Probe Mode	Choose whether internal or external sensor should be used
19. Multiple Start/Stop	Enable • TEMP002 can be restarted after the device was stopped Disable • TEMP002 can't be restarted without configuration after the device was stopped
20. Pause	Enable or disable the "Pause" mode
21. Alarm	Choose the alarm setting between: No Alarm • No alarm setting, only temp. recording Single Alarm • A single "over" and "below" alarm point can be set Multiple Alarm • Up to 3 "over" and 2 "under" alarm points can be set
22. Alarm Zones	Enable or disable the desired alarm zones (depends on the alarm setting)
23. Temperature	Choose the alarm temperature
24. Alarm Mode	Choose between single or cumulative
25. Alarm Delay	Choose the alarm delay
	Save setting to program the logger
	Save parameter settings
	Load parameter settings
	Back to home page
	Temperature adjustment

### 4.2 tempmate.®-S12



1. Serial Number	Shows the serial number of the connected device
2. Internal ID	Internal ID can be saved to the tempmate.®-S1 v2
3. Log Interval	Adjust the time between the measuring points
4. Log Cycle	Calculates the maximum runtime until the storage is full (battery life excluded!)
5. Temporary Report	Automatic report generation without stopping the logger
6. Password	Enable or disable password function for PDF and CSV (PDF or CSV can't be read out without password)
7. Set Password	Choose a password with 6 digits (alpha-numeric)
8. Start Mode	Right now • temp002 v2 starts working after disconnecting Start by Button • temp002 starts after pressing "Start" for 5 seconds Timing • Start date and time has to be set before, then temp002 starts automatically when the start time is reached. It can't be started before!
9. Start Delay	Choose start delay (unlocked in "Start by Button" mode)
10. Start Time	Choose start time (unlocked in "Timing" start mode)
11. Description	Type your own description here
12. Temp. Unit	Switch the temperature unit between "°C" and "°F"

---

13. Record Mode	“Stop when full” is mandatory for temp002 S1v2
14. Stop Mode	Select “Stop by Button” or “Stop by Software“
15. Time Zone	Change the time zone (factory setting is UTC +00:00)
16. Battery	Shows the battery status of the current device
17. Alarm Setting	Choose the alarm setting between: No Alarm • No alarm setting, only temperature recording Single Alarm • A single “over” and “below” alarm point can be set Multiple Alarm • Up to 3 “over” and 2 “under” alarm points can be set
18. Alarm Zones	Enable or disable the desired alarm zones (depends on the chosen alarm setting)
19. Temperature	Choose the alarm temperature
20. Alarm Mode	Choose between single or cumulative
21. Alarm Delay	Choose the alarm delay

---



Save setting to program the logger



Save parameter settings



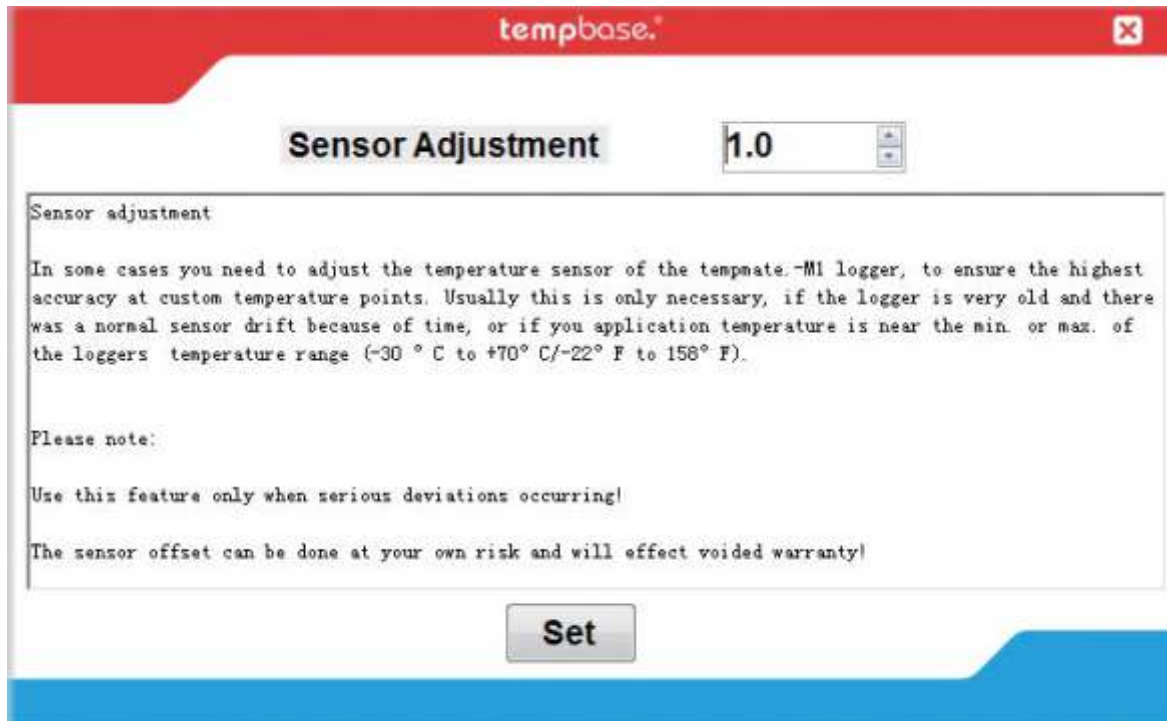
Load parameter settings



Back to home page

### 05.5. Sensor Adjustment

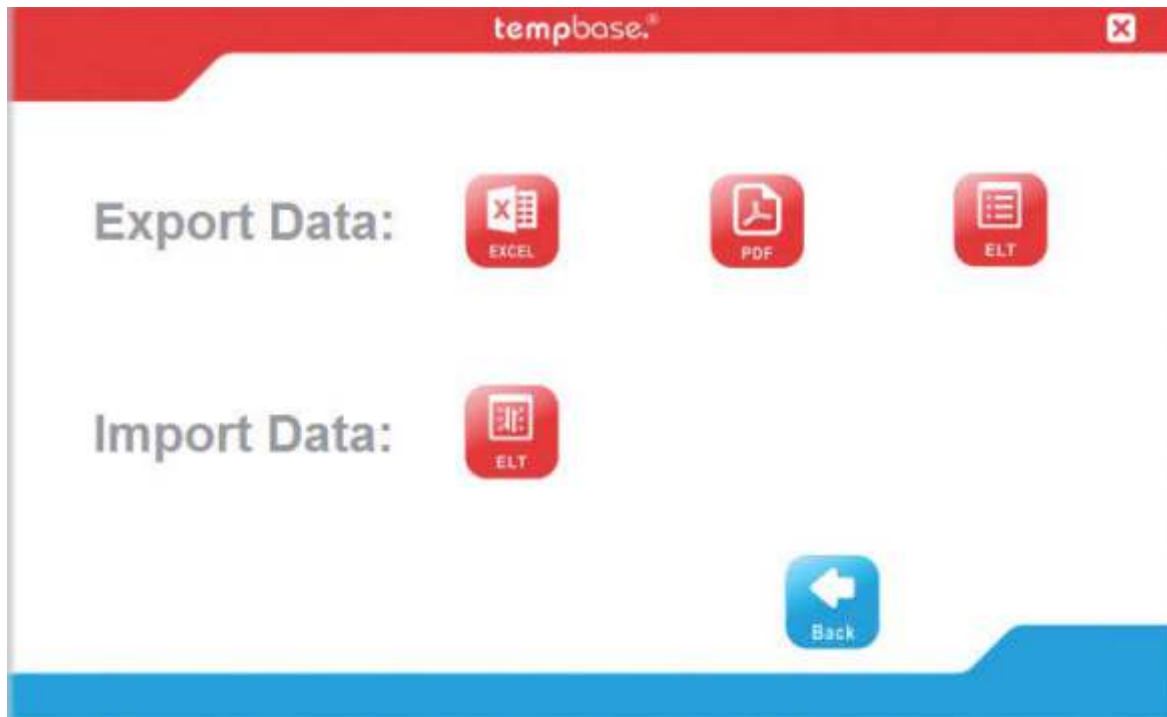
(only for TEMP002)



**Sensor adjustment**

Temperature adjustment range: for Celsius  $\pm 5.0^{\circ}\text{C}$ ; for Fahrenheit  $\pm 20\text{F}$

## 06. Export Data



Export data in the format of EXCEL



Export data in the format of PDF



Export data in the format of ELT



Restore/insert ELT data to the software